

# ‘Observation in new Educational Climate ‘

## University of Bolton



*Welcome to* **#UniAsItShouldBe**

Dr Sarah Telfer  
Associate TIRI Professor  
[s.telfer@bolton.ac.uk](mailto:s.telfer@bolton.ac.uk)  
Tel 01204 903304  
Available on Microsoft  
teams



Teaching Intensive, Research Informed



# Observation in the time of Covid



- Face to face
- Remotely- Zoom/  
Microsoft  
teams/Recordings

# Placements in the FE & Skills Sector



## Issues:

- Schools and colleges not taking trainee teachers
- New CV procedures delaying entry to placements
- Trainees isolating or becoming ill
- Moving to on-line teaching
- Smaller groups in colleges and schools

# Semester 1- Blended approach to teaching

Face to face –one day

On line- one day

Tutorials on Zoom /Teams/Face to Face





# TIRI Professors

## Top Tips for a Creative Classroom

TIRI Professors work hard to ensure high quality, intensive teaching, informed by research, is delivered across the University



Teaching Intensive, Research Informed

# Top Tip 1

## Dr Sarah Telfer- Creative Teaching- Streaming Live!

Strike the Pose- Spotlight Theatre Lighting



Teaching Live & Streaming Live



Home alone –Embroidery- Lady M



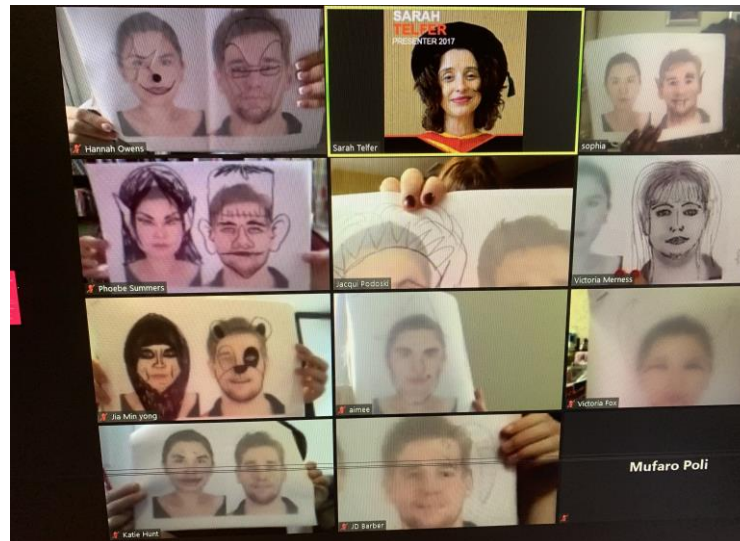
# Top Tip 2 Dr Sarah Telfer

You can teach anything on line! Creative Practice Micro teaches on line

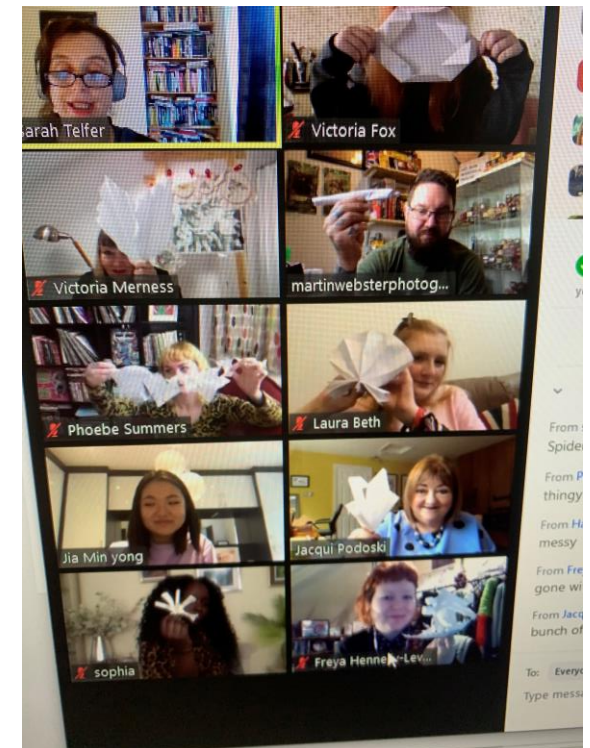


Teaching Intensive, Research Informed

Illustration –character faces



Art- Paper Sculptures



<https://www.teachertoolkit.co.uk/2020/03/15/how-to-teach-online/>

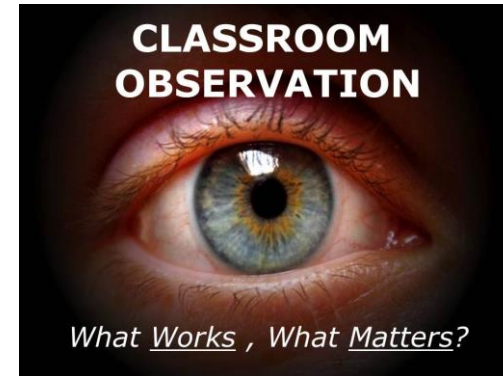


Top Tip 3

Observation assessment Criteria-Covid Criteria



# Challenges for Observers



## Challenges:

- Reading classroom- learners' face behind masks –body language
- On line observations- 'elephant in the room' syndrome
- Online observations- no cameras on / passive students/ 'ghosting'
- Lack of physical and emotional interaction

# Questions

